

Rock & Alluvium 

The Piling Specialists

**FEDERATION
OF PILING
SPECIALISTS**

About Us

Rock & Alluvium—The Piling Specialists



COMPANY HISTORY:

Founded in 1963 and part of Van Elle Group.

PILING TECHNIQUES:

Various including CFA Piling and Rotary Piling.

KEY CONTACTS:

Shane Baker
General Manager

Nick Dewey
Pre-Construction Manager

Rock & Alluvium has been providing augered piling solutions to the civil engineering and building sectors of the construction industry since 1963 and we are one of the UK's leading piling contractors.

By offering various piling techniques including Continuous Flight Auger (CFA) and Rotary Piling we can install piles in a variety of different soil types, under various load conditions. This includes not just bearing piles, but also, by designing the piles to resist tensile and horizontal loads, applications such as Secant (interlocking) or Contiguous piled retaining walls.

Rock & Alluvium is an independently audited member of the Federation of Piling Specialists (FPS) thus giving surety to our customers that best practices are being adopted for the design and installation of piles. We are proud to announce that we also have the following independently audited accreditations: - ISO 9001 - Quality Management; ISO 45001 – Occupational Health & Safety Management; ISO 14001 – Environmental Management; SMAS WorkSafe and Achilles – Building Confidence.

With piling experience across the UK providing the benefit of local geotechnical knowledge along with our Fleet Services Depot, Rock & Alluvium can offer its customers a value for money service throughout the UK.

Phone: 01372389333 / 01773580580

E-mail: enquiries@rockal.com

Web: www.rockal.com

Office: Leret House, 4 Swan Court, High Street, Leatherhead, KT22 8AH

**FEDERATION
OF PILING
SPECIALISTS**


BuildingConfidence Advanced

 Member

LRQA

ISO 45001 Occupational Health and Safety Management, ISO 9001 Quality Management and ISO 14001 Environmental Management certified by BSI under certificate numbers 13709 - 13136 - 13708



Constructionline
Gold Member

Smass
WORKSAFE

Our Capabilities

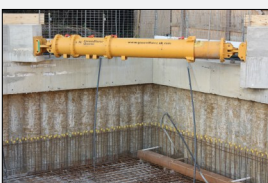
Rock & Alluvium—The Piling Specialists



GROUND ENGINEERING TECHNIQUES:

Various - Continuous Flight Auger (CFA) Piling and Rotary Piling.

Designs for Bearing Piles, Secant and Contiguous Piled Retaining Walls and Working Platforms.



Continuous Flight Auger Piling (CFA Piling)

CFA Piling is one of the most widely adopted piling techniques due to its low impact on the surrounding environment. It is ideal for use near any environmentally sensitive situation including but not limited to listed buildings, water treatment works and contaminated sites. We offer many innovative piling solutions, allowing for instance the installation of deep excavation Piled Retaining Walls.

With CFA Piling the flight auger is drilled into the ground to the required design depth. The auger is withdrawn whilst concrete (designed to a specific mix) is pumped through the hollow stem.

CFA Piling allows for the installation of piles up to depths of 29m and diameters up to 1200mm.

Rotary Piling

With Rotary Piling a temporary casing is installed through any granular material and sealed into a cohesive soil strata (clay) to prevent the bore collapsing (the top of the casing is left approx. 1m above piling platform level for safety reasons). The auger is drilled into the ground in sections advancing the dig by approximately 1-2m at a time, until the required toe level is achieved, leaving an open bore. The reinforcement cage is then levelled in and hung prior to the concrete being poured. The concrete is generally poured so that it lies just above the steel level on extraction of the temporary casing to protect the steel from damage during the dig process.

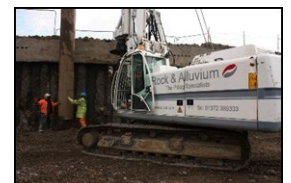
Rotary Piling allows for the installation of piles up to depths of 34m and diameters up to 1200mm.

- Concrete can be placed to or below commencement surface level
- Temporary or Permanent Liners can be installed
- Piles can be installed through particularly stiff or hard strata
- Inspect the pile boring during construction

Design

Our in-house design team can design the piles to meet your loading requirements. To determine the diameter and depth of pile required they will use the site investigation report. This report contains various information about the site including the boreholes that show how the soil strata changes with depth.

From the soils information the design team will produce a formal design package using recognised CFA or Rotary design parameters and the latest standards to provide the pile depths, diameters and reinforcement required.



Health & Safety

Rock & Alluvium—The Piling Specialists

**FEDERATION
OF PILING
SPECIALISTS**

Smas 
WORKSAFE



SUSTAINABILITY:

We are committed to assessing sustainability risks and opportunities, and thereafter taking appropriate steps to mitigate negative impacts and enhance positive impacts, for the benefit of our key stakeholders and the wider environment.

QUALITY DELIVERY:

We ensure that Quality, Customer Focus and the importance of implementing the Company policies and procedures are integral to our working practices.

SUPPLIERS:

Steel —CARES

Concrete —QSRMC/ISO9001

Transport—FORS

Rock & Alluvium is committed to a policy of effectively managing all aspects of health, safety and welfare and minimising the impact of our business processes on the natural environment and the community at large.

- Committed to continual improvement and promotion of Health, Safety and Environmental practice throughout the business unit.
- Involvement and communication with workforce via conferences, safety days, briefings and reporting.
- Target an AFR of zero every year.
- A dedicated Health, Safety and Environmental advisor with support from the Van Eille Group HS&S team.
- Near Miss and Observation Reporting Scheme in place along with Behavioural Based Safety training.
- Audited Member of the Federation of Piling Specialists (FPS)
- ISO 45001: 2018 Accredited – Occupational Health & Safety Management System
- ISO 9001:2015 UKAS Accredited – Quality Management System
- ISO 14001:2015 Accredited – Environmental Management System
- SMAS WorkSafe accreditation
- 100% CSCS / CPCS Workforce
- All rig supervisors hold the two day CITB Site Supervisors Safety Training Scheme (SSSTS) or FPS equivalent.
- Operations Managers and Rig Supervisors attending the CITB Site Managers Safety Training Scheme (SMSTS) on a rolling programme.
- Committed to controlling our environmental impact.
- Positive and proactive approach to waste management and engage in sustainable procurement.
- No enforcement actions or prosecutions have been issued to the company.
- HS&E and Operations departments have completed IOSH Managing Environmental Responsibilities course.

Where We Are Located

Rock & Alluvium—The Piling Specialists



Head Office
Leatherhead, Surrey
Tel: 01372 389 333



Fleet Services

OPERATING AREAS:

UK Wide

CONTACT US:

Phone:

01372 389 333

E-mail:

enquiries@rockal.com

Our Head Office is based in Leatherhead, Surrey from where we will help with all your piling enquiries and develop cost-effective tenders tailored to your needs. We also have a fleet services division covering the UK.

Our fleet services division supports sites nationwide and provides services that include:-

- Plant Maintenance
- Piling Rig servicing
- Reinforcement preparation
- Material storage
- Vehicle loading and off-loading facilities
- Fully trained staff for maintenance, servicing and on-site repairs



Case Studies

Rock & Alluvium—The Piling Specialists



Source: Willmott Dixon



Source: Leigh Academy Rainham



Clockwise from Top-Left: Wimbledon AELTC, Leigh Academy Rainham, Hoxton Hotel London, Brentford Waterside



Source: GVA

WIMBLEDON AELTC:

Commercial, Willmott Dixon, £2.8m, CFA & Rotary, 600mm / 750mm Bearing Piles & Secant Retaining Walls.

LEIGH ACADEMY, RAINHAM:

Education, Bowmer + Kirkland, £162k, 3 Wks., 350mm Bearing Piles.

BRENTFORD WATERSIDE:

Residential & Commercial, Ballymore Construction, £1.1m, CFA Piling, 450mm / 500mm / 600mm Bearing Piles.

The HOXTON HOTEL:

Commercial, McLaren Construction, £510k, 8wks.

Rock & Alluvium work on many residential house building and commercial projects, utilising multiple rigs and either CFA or rotary piling techniques, to install bearing piles with secant or contiguous piled retaining walls.

Wimbledon AELTC: Installation of several large diameter secant piled retaining walls both 600mm & 750mm diameter piles, retaining 5.3m to 8.1m excavations. Used pre-fabricated 40mm diameter reinforcement cages weighing over 1.4 Tonnes.

Leigh Academy: Installation of over 450 bearing piles at 350mm diameter up to 13.2m deep. Just South of the River Medway using a Soilmec SF50 Piling Rig.

Brentford Waterside: Almost 900 bearing piles installed to depths of up to 27.5m. Included two preliminary and eight working pile load tests across the site. 18.5 weeks to complete the piling with two piling rigs.

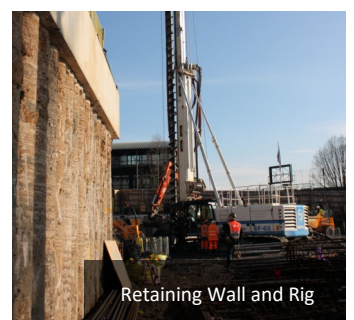
The Hoxton Hotel: Located next to Shepherd's Bush common in London. Installed bearing piles and secant piled retaining wall retaining up to 5.1m excavations. 490 piles in total.



Secant Piled Retaining Wall



Multiple Rigs



Retaining Wall and Rig

Case Studies

Rock & Alluvium—The Piling Specialists



Clockwise from Top-Left: Fresh Wharf - Barking, Leisure Centre - Croydon, White City - West London, A52 Derby

FRESH WHARF, BARKING:

Residential, Countryside Properties, £1.1m, 24 wks., 1800no. CFA Bearing Piles.

WHITE CITY, WEST LONDON:

Residential, St. James, £2.2m, Contig. and Secant Piled Retaining Walls, 1400no. CFA Bearing Piles.

A52 WYVERN, DERBY:

Infrastructure, Galliford Try Infrastructure, £370k, 6wks. CFA Bearing Piles at 600mm / 900mm diameters.

LEISURE CENTRE, CROYDON:

Public Leisure, Willmott Dixon, £330k, CFA Piles, 1200mm Diameter to 29m.

As well as working on prestigious large-scale residential developments, we also undertake piling on infrastructure and public projects. Our piling rigs will install piles up to 1200mm diameter and depths up to 29m.

Fresh Wharf: Site located adjacent to River Roding and North Circular Road. Installed 1800no. CFA bearing piles at 350mm / 400mm & 450mm diameters with multiple rigs over 24 weeks.

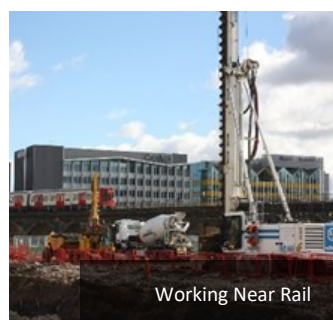
White City: Opposite TV Centre, Rock & Alluvium installed 1400no. CFA bearing piles and both secant and contiguous piled retaining walls for 6.5m excavations. Site was adjacent to underground railway line.

A52 Wyvern: Part of Derby Transport Improvement Scheme by Derby City Council, installed piles for the wing walls, approach ramps and footbridge. Piles installed into Mercia Mudstone.

Leisure Centre, New Addington: Installed 1200mm diameter piles up to 29m depth utilising an SR75 Soilmec Piling Rig.



SR75 Piling Rig, 1200mm



Working Near Rail



Craning in Steel Cages

Rock & Alluvium, Leret House, 4 Swan Court, High Street, Leatherhead, Surrey, KT22 8AH
Tel: 01372 389 333 E-mail: enquiries@rockal.com Website: www.rockal.com

Part of Van Elle Holdings plc